

date March, 2021  
location Dortmund, Germany

subject  
contact  
e-mail

Predictor-LimA licenses  
S.E. (Erwin) Hartog van Banda  
[info@softnoise.com](mailto:info@softnoise.com)

## Predictor-LimA

Predictor-LimA is available in 5 configurations 7810-B, 7810-A, 7810-G, 7810-C and 7810-I. 1-year rental prices start at 624 Euro per year. All 5 configurations include the intuitive Predictor GUI with the new Analyst method. The 7810-B, 7810-A and 7810-G configurations also include the LimA GUI. See appendix 1 for a detailed overview and comparison of the configurations.

Perpetual and rental licenses on Predictor-LimA can be purchased directly on-line in our web shop. See <https://softnoise.com/products/predictor-lima/prices-configurations/>

The Predictor-LimA Software Suite is the complete solution for all environmental noise projects. Noise predictions for industry, roads, railways, aircraft and wind turbines are all supported. The software is used by acoustic consultants, environmental authorities, heavy industries and educational institutes.

Predictor includes the Analyst method. This method allows the import and cumulation of calculated models and shows the interpolated noise contours on top of a geographical map. The noise contours can be calculated with Predictor or any other noise prediction software. This also enables to show the difference contours between e.g. the situation in 2017 and 2022. As a next step the noise exposed surface in m<sup>2</sup> per 5 dB noise class can be determined.

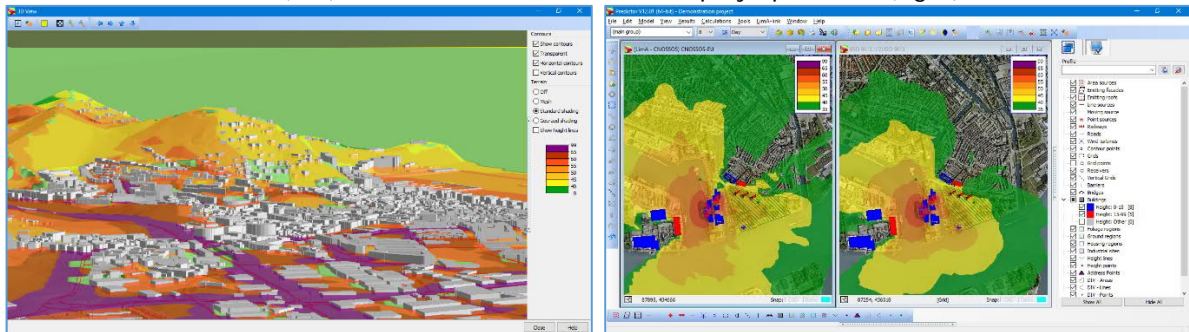
## Predictor: Analyst method



### Applications

The Predictor-LimA Software Suite can be used for large scale noise mapping but also for impact studies of single roads or single noise sources such as cooling units on the roof of buildings. The flexible and modular LimA components can also be used for GIS integration.

Predictor GUI: 3D View (left) and multi model view with display option bar (right)



### Predictor-LimA Configurations and applications

V2021	Type	Predictor GUI	LimA GUI	Application examples
Predictor Standard	7810-I	✓	-	Impact studies for small areas and short stretches of highways and railways. Road, rail, industry, wind turbines
Predictor Plus	7810-C	✓	-	Impact studies for large areas and medium long stretches of highways and railways. Road, rail, industry, wind turbines
Predictor-LimA Standard	7810-G	✓	✓	Impact studies for small areas and short stretches of highways and railways. Road, rail, industry, wind turbines, CNOSSOS-EU. Integration in GIS systems
Predictor-LimA Plus	7810-A	✓	✓	Impact studies for large areas and medium long stretches of highways and railways. Road, rail, industry, wind turbines, CNOSSOS-EU. Integration in GIS systems
Predictor-LimA Advanced	7810-B	✓	✓	EU Noise maps and EU population exposure. Large scale city wide noise mapping. Road, rail, industry, wind turbines, CNOSSOS-EU. Integration in GIS systems
Cloud Calculation Service	Add-on for all configurations	✓	-	For all applications. Cloud calculations can be used anywhere. From home, the office or any other location. No USB key needed.

Prices Predictor-LimA licenses

prices V2021

V2021	Type	Perpetual license including 1 year maintenance	1-year maintenance continuation for perpetual license	1-year rental license including maintenance	Softnoise USB key
Predictor Standard	7810-I	€ 2.228	€ 379	€ 624	€ 250
Predictor Plus	7810-C	€ 4.028	€ 685	€ 1128	€ 250
Predictor-LimA Standard	7810-G	€ 5.828	€ 991	€ 1632	€ 250
Predictor-LimA Plus	7810-A	€ 11.678	€ 1.985	€ 3270	€ 250
Predictor-LimA Advanced	7810-B	€ 17.078	€ 2.903	€ 4782	€ 250
Cloud Calculation Service add-on	all	From € 960/year			n.a.

Softnoise USB key

For using Predictor-LimA locally, a Softnoise USB key needs to be inserted in an USB port of the computer on which the software will be used. Customers that originally purchased Predictor-LimA at B&K, EMS or Envirosuite can use their existing B&K key.

Predictor-LimA Cloud Calculation Service (PLCCS)

This add-on option turns your single user local license into a multi-user cloud license for the Predictor GUI. Cloud calculations can be used anywhere. From home, the office or any other location. No USB key needed. The service uses a modern and secure ISO 27001 certified infrastructure. A standard PLCCS license provides the Predictor user with standard performance. A Pro PLCCS has 4 times the standard performance. For (EU) noise mapping projects that need to be calculated within a certain time frame higher performances for a limited period are available on request.

Maintenance (Included)

Free upgrades and questions regarding installation and warning and error messages in the software are included in a 1-year rental license and in a perpetual license for the first year. Continuation of maintenance for perpetual licenses can be purchased separately at the end of the current maintenance period.

Premium Support (Optional): 395 Euro per year

Questions regarding the use of the software as well as model reviews on data consistency and obvious modelling errors are handled within Premium Support. Premium Support includes in total 3 hours of support. This includes answering support questions by email to [info@softnoise.com](mailto:info@softnoise.com), model reviews and on-line Q/A sessions. A model review will result in a list of findings and recommendations from our experts. We recommend all new users of Predictor-LimA to include Premium Support for the first year. It will speed up the learning process and it will increase the quality of your models.

Online training (Optional): 450 Euro

Online training can be purchased in units of 3 hours. We recommend to start with 3 hours. As preparation for an online training the trainee is asked to supply a list of subjects and/or questions. We will group the items on the list in sections that belong to each other. The training will be done based on the list. The training will be given in separate sessions of 1 or 1.5 hour. Every session will be recorded and send as a mp4 file directly after the session. A maximum of 1 session per day will be given. In this way the trainee has time to digest the information and come up with new subjects/questions to be put on the list.

### Predictor-LimA Configurations

V2021	Predictor Standard	Predictor Plus	Predictor-LimA Standard	Predictor-LimA Plus	Predictor-LimA Advanced
Type	7810-I	7810-C	7810-G	7810-A	7810-B
Perpetual license incl. 1-year maintenance	€ 2.228	€ 4.028	€ 5.828	€ 11.678	€ 17.078
1-year maintenance continuation for perpetual license	€ 379	€ 685	€ 991	€ 1.985	€ 2.903
1-year rental license incl. maintenance	€ 624	€ 1.128	€ 1.632	€ 3.270	€ 4.782
PLCCS	From € 960/year				
Model size*	Standard	Plus	Standard	Plus	Advanced
Cores**	2	4	2	4	8
Tiling option	Not included	Not included	Included	Included	Included
Acoustic Determinator	Not included	Not included	Not included	Included	Included
Predictor GUI and supported methods	Analyst, Harmonoise, ISO 9613, CRTN, DAL 32, RMR, NMPB – 2008, XPS 31 – 133, BS5228, HJ2.4-2009, TNM, ENM-link.		CNOSSOS, Analyst, Harmonoise, ISO 9613, CRTN, DAL 32, RMR, NMPB – 2008, XPS 31 – 133, BS5228, HJ2.4-2009, TNM, ENM-link.		
LimA GUI and supported methods	Not included	Not included	CNOSSOS, Harmonoise, ISO 9613, CRTN, DAL 32, RMR, NMPB – 2008, XPS 31 – 133, BS5228, MSZ 15036, RLS 90, RLS 19, DIN 18005, RVS 3.02, UT2.1 – 302, VDI 2714 – 2720 – 2571, OAL 28, SCHALL 03 (1990 and 2014), AKUSTIK 04, TRANSPERAPID, OAL 20, CRN, MSZ 2904, VBUS, VBUSch, VBUF and VBUI		

\*Model size (maximum calculation size per model without tiling)

- Advanced: 200,000 emitters and 1,000,000 obstacle or terrain edges
- Plus: 12,000 emitters and 60,000 obstacle edges and 1,000,000 obstacle or terrain edges
- Standard: 4,000 emitters and 20,000 obstacle edges and 1,000,000 obstacle or terrain edges

\*\*Cores

The maximum number of logical processors (cores) used for the calculation. For additional cores, contact Softnoise.